

SOLD by Brisbane Real Estate

Contact Agent

Rarely available, just a stroll to the Sherwood Arboretum, here is a superb 436sqm block, located in a private cul-de-sac location just waiting for you to build your dream home on.

This block offers something truly unique. Not quite vacant land as it has a modern, comfortable fully self contained granny flat, with kitchen, bathroom and living area. There is also a pool on the block however the Seller has listed it at land value only.

Land in Highside Sherwood is becoming increasingly rare, take this opportunity to build new in this much sought after suburb.

- 436sqm allotment, 20m x 21m
- Approximately 12m above mean sea level
- Quiet parkside, cul-de-sac location
- Less than 9kms from the CBD
- Highside Sherwood

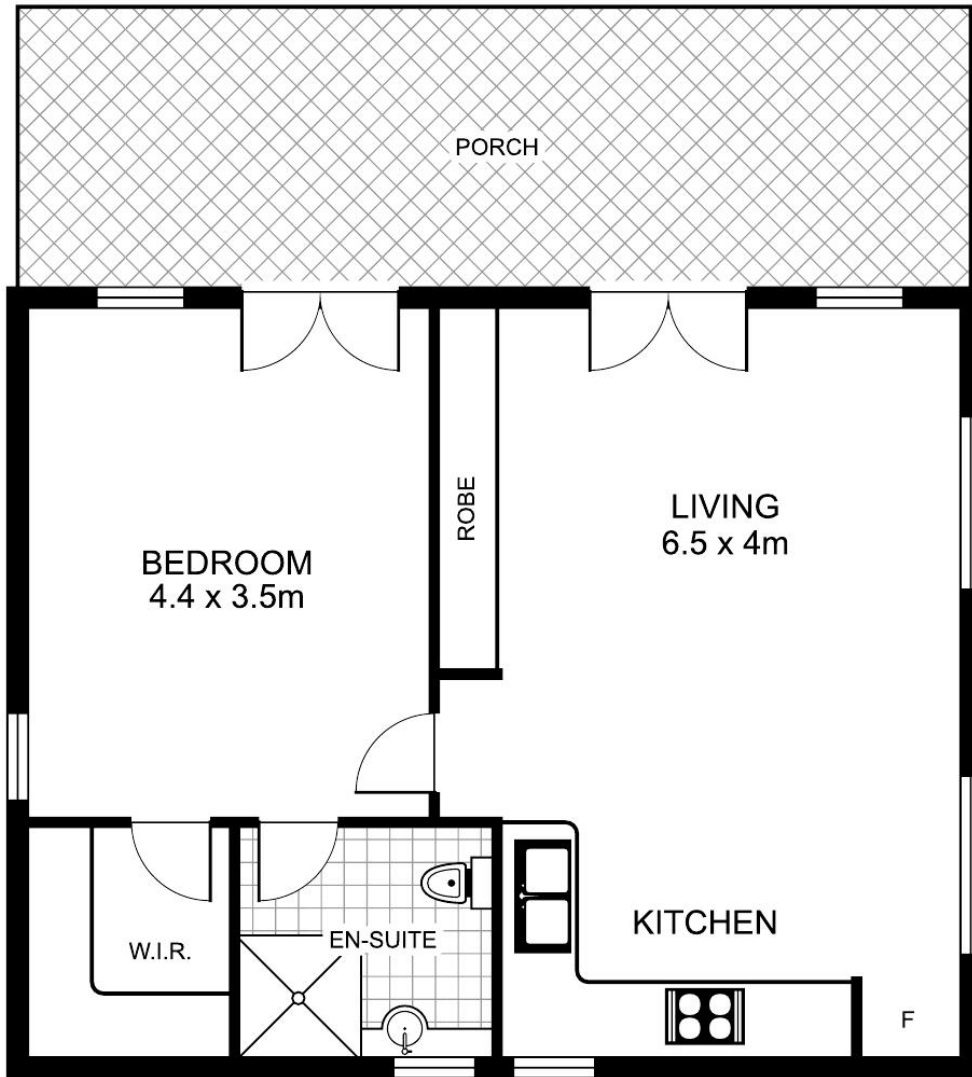
Set in the heart of Sherwood, this position is within minutes of public transport, one of the area's best parks, as well as shops, restaurants, cinemas and river walks.

Priced to sell quickly at \$499,000

Key Features

- Pool
- Built-in wardrobes
- Close to Schools
- Close to Shops
- Close to Transport
- Garden

**52 Ferry Street,
SHERWOOD**



This floor plan is intended as a guide only. Layout dimensions are approximate only. No representations or warranties of any nature whatsoever are given or intended. Any person using this information should rely on their own enquiries

Plans by
surroundpix
com.au
1300 30 32 40