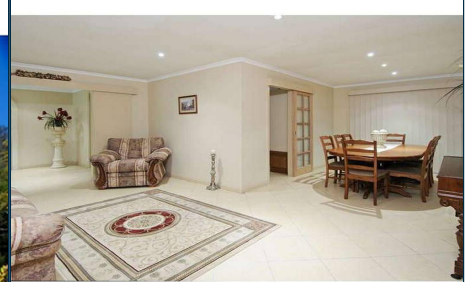




© Kerry Lewis



© Kerry Lewis

www.rpdafa.com



© Kerry Lewis

www.rpdafa.com

MASSIVE HOME....1.8 USABLE ACRES.....PRIME POSITION.....OWNER SAYS BRING ANY OFFER

\$629K negotiable

Massive home....fantastic position with terrific capital growth potential....best of town amenities, country feel. Owners are committed elsewhere, they want OUT!!

IN SHORT

- 7030 sq metre block, fully fenced, walk to shops and school
- top of the range Jennings Classic design
- 5 bedrooms, 2.5 bathrooms, parent retreat
- 3 living areas with open fireplace and s/s rev cycle air con
- large outdoor undercover entertainment area, fish pond with cascade
- double garage with storage plus 3 bay powered shed with side street access
- in ground pool with gazebo area
- sweeping lawns, natural dam, olive grove, usable land
- walk to shops and bus stop

IN DETAIL

- generous living with free flow floor plan leads out to massive undercover outdoor entertainment area
- private setting is fully fenced usable acreage and is in walking distance to shops
- two generous living rooms provide good space for family choice or indoor entertaining
- informal living room opens off kitchen with meals area and separate lounge boasts cosy open fire place
- 5 roomy bedrooms have built in robes
- master bedroom enjoys ensuite bathroom, plenty of storage and its own private study or sitting room
- there is rev cycle air con in living areas and bedrooms
- relaxed outdoor living space has built in BBQ, pretty fishpond and fountain waterfall

Key Features

- Pool
- Air Conditioning
- Built-in wardrobes
- Close to Schools
- Close to Shops
- Close to Transport
- Fireplace(s)

- double garage is easy entry via remote control electric doors and has good storage space
- neatly landscaped landscape enjoys its own dam surrounded by olive trees ready to produce a cash crop
- cool and private salt water pool sports gazebo entertaining area
- all school buses stop at front gate and local Woolies and shops close by
- easy run into Kenmore Village only 12 mins away, or commute to Bris CBD in 25 and Amberley or Ipswich in 12

This massive home provides the best of living in all seasons with huge flexibility for all the family's activities....great outdoor living, terrific yard, usable land and a fantastic central position with absolute privacy and security.